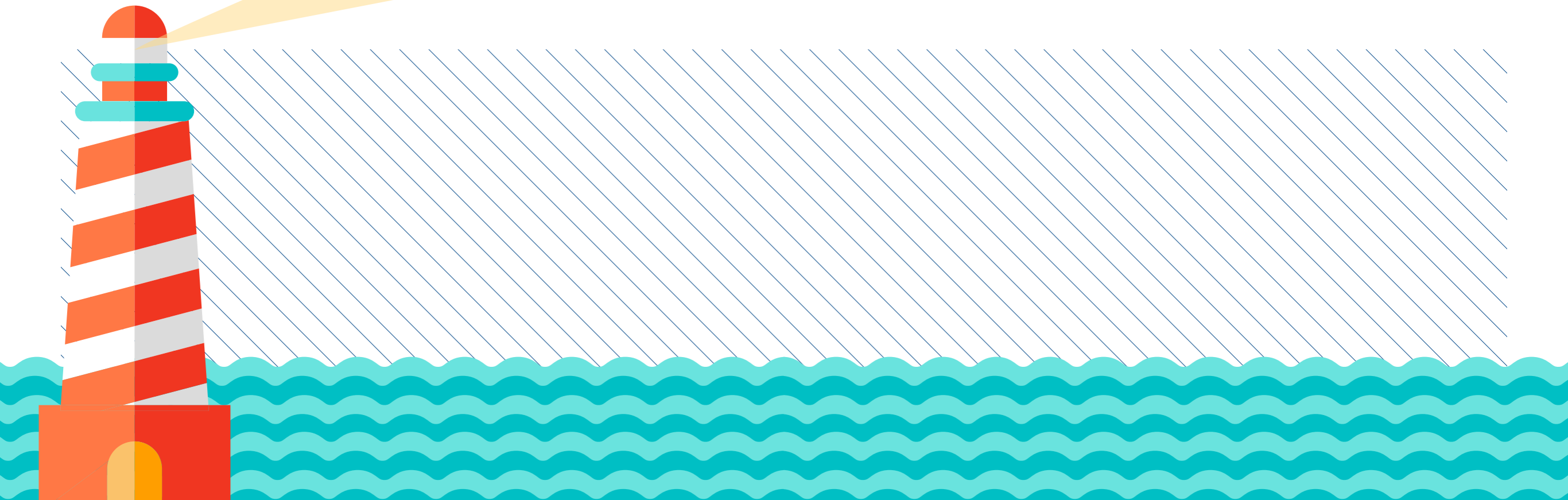


Líneas marítimas regulares
Regular shipping lines



| DENOMINACION / NAME | OPERADOR / OPERATOR | CONSIGNATARIO / AGENT | RUTA / ROUTE | FRECUENCIA / FREQUENCY | BUQUES / VESSELS |
|--|---------------------|-------------------------|---|---|------------------------|
| MOTRIL-MELILLA | NAVIERA ARMAS | LOGISTICA LOPEZ GUILLEN | MOTRIL - MELILLA | 1 Escala diaria / 1 Daily call | R/P VOLCAN DE TINAMAR |
| MOTRIL-NADOR | NAVIERA ARMAS | LOGISTICA LOPEZ GUILLEN | MOTRIL - NADOR | 3 Escalas semanales / 3 Weekly calls | R/P VOLCAN DE TAMASITE |
| MOTRIL-ALHUCEMAS | NAVIERA ARMAS | LOGISTICA LOPEZ GUILLEN | MOTRIL - ALHUCEMAS | 1 Escala semanales / Weekly call | R/P VOLCAN DE TAMASITE |
| CANARY ISLANDS, MADEIRA & SOUTH SPAIN SERVICE (CISS) | OPDR | ERHARDT MEDITERRANEO | ISLAS CANARIAS, PENÍNSULA IBÉRICA & CASABLANCA * | 1 Escala semanal / 1 Call per week | P/C OPDR TENERIFE |

* Antwerp, Hamburg, Rotterdam, Felixstowe, Casablanca, Canical, Sta. Cruz de Tenerife, Las Palmas de GC, Arrecife, Tangier, Gibraltar, Melilla, Cartagena, Motril, Cádiz, Felixstowe, Rotterdam, Hamburg, Antwerp.