

1





# 1

## Estados financieros Financial reports

- 1.1 **CUENTA DE PÉRDIDAS Y GANANCIAS  
CORRESPONDIENTE AL EJERCICIO TERMINADO  
EL 31-12-13**  
PROFIT AND LOSS STATEMENT  
FOR THE YEAR ENDING 31-12-13

---

- 1.2 **BALANCE AL CIERRE DEL EJERCICIO 2013**  
BALANCE SHEET 2013 FINANCIAL YEAR

---

- 1.3 **ESTADO DE CAMBIOS EN EL PATRIMONIO  
NETO CORRESPONDIENTE AL EJERCICIO  
TERMINADO EL 31-12-13**  
EQUITY STATEMENT FOR THE PERIOD  
ENDING 31-12-13

## 1.1 CUENTA DE PÉRDIDAS Y GANANCIAS CORRESPONDIENTE AL EJERCICIO TERMINADO EL 31-12-14

### PROFIT AND LOSS STATEMENT FOR THE YEAR ENDING 31-12-14

EUROS

DEBE / HABER · LIABILITIES / ASSETS	2014	2013
<b>1. Importe neto de la cifra de negocios / Net turnover</b>	<b>60.691.719,53</b>	<b>65.643.139,21</b>
A. Tasas portuarias / Port taxes	42.543.171,38	48.373.156,93
a) Tasa de ocupación / Fees for exclusive use of port domain	12.594.141,25	14.601.116,85
b) Tasas de utilización / Fees for special use of port domain	23.124.731,63	26.469.025,18
1. Tasa del buque (T1) / Shipping fees	6.061.462,38	6.103.923,50
2. Tasa de las embarcaciones deportivas y de recreo (T5) / Recreational craft fees	3.279.938,09	4.121.780,27
3. Tasa del pasaje (T2) / Passenger fees	6.587.165,52	9.072.296,55
4. Tasa de la mercancía (T3) / Cargo fees	6.884.654,22	6.796.998,58
5. Tasa de la pesca fresca (T4) / Wet fish fees	123.512,54	132.470,13
6. Tasa por utilización especial de la zona de tránsito (T6) / Fee for special use of transit area (T6)	187.998,88	241.556,15
c) Tasa de actividad / Fees for special use of public port domain	5.456.458,04	5.771.180,48
d) Tasa de ayudas a la navegación / Fees for non-commercial activities	1.367.840,46	1.531.834,42
B. Otros ingresos de negocio / Other revenue	18.148.548,15	17.269.982,28
a) Importes adicionales a las tasas / Additional charge revenue	10.947.509,83	10.808.077,96
b) Tarifas y otros / Tariffs and sundry	7.201.038,32	6.461.904,32
<b>3. Trabajos realizados por la empresa para su activo / Work performed by the undertaking for assets</b>	-	-
<b>5. Otros ingresos de explotación / Other operational revenue</b>	<b>2.266.672,15</b>	<b>2.386.120,81</b>
a) Ingresos accesorios y otros de gestión corriente / Accessory and general operating revenue	1.094.798,35	1.378.305,11
b) Subvenciones de explotación incorporadas al resultado del ejercicio / Operational subsidies included in results	-	-
c) Ingresos traspasados al resultado por concesiones revertidas / Revenue from reverted leases	199.873,80	125.815,70
d) Fondo de Compensación Interportuario recibido / Inter-port Compensation Fund received	972.000,00	882.000,00
<b>6. Gastos de personal / Personnel expenditure</b>	<b>(13.865.212,47)</b>	<b>(13.618.377,31)</b>
a) Sueldos, salarios y asimilados / Wages and salaries	(9.936.641,74)	(9.841.862,01)
b) Indemnizaciones / Indemnities	(96.765,57)	(5.674,56)
c) Cargas sociales / Social security	(3.831.805,16)	(3.770.840,74)
d) Provisiones / Provisions	-	-
<b>7. Otros gastos de explotación / Other operational expenditure</b>	<b>(16.556.444,77)</b>	<b>(16.752.780,61)</b>
a) Servicios exteriores / Outside services	(14.360.402,47)	(14.040.321,11)
1. Reparaciones y conservación / Repair and maintenance	(5.315.776,08)	(5.572.622,25)
2. Servicios de profesionales independientes / Outsourcing	(729.127,05)	(978.496,46)
3. Suministros y consumos / Provisions	(4.754.541,28)	(4.490.245,72)
4. Otros servicios exteriores / Other outside services	(3.560.958,06)	(2.998.956,68)
b) Tributos / Taxes	(1.341.437,57)	(1.072.423,24)
c) Pérdidas, deterioro y variación de provisiones por operaciones comerciales / Losses, derioration and variation of provisions for commercial operations	1.682.041,63	1.695.546,19
d) Otros gastos de gestión corriente / Other management expenses	(677.183,22)	(1.764.466,39)
e) Aportación a Puertos del Estado art. 19.1.b) RDL 2/2011 / Contribution to Inter-Port Compensation Fund art.11b) Law 48/2003	(967.463,14)	(854.116,06)
f) Fondo de Compensación Interportuario aportado / Interport contribution fund contributed	(892.000,00)	(717.000,00)
<b>8. Amortizaciones del inmovilizado / Amortisation of fixed assets</b>	<b>(18.585.875,87)</b>	<b>(16.926.751,23)</b>
<b>9. Imputación de subvenciones de inmovilizado no financiero y otras / Imputation of revenue from non-financial fixed assets</b>	<b>1.708.137,19</b>	<b>1.720.017,82</b>
<b>10. Excesos de provisiones / Excess provisions</b>	-	-

EUROS

DEBE / HABER · LIABILITIES / ASSETS	2014	2013
<b>11. Deterioro y resultado por enajenaciones del inmovilizado / Loss and balance on disposal of fixed assets</b>	<b>(33.558,53)</b>	-
a) Deterioros y pérdidas / Loss and deterioration	-	-
b) Resultados por enajenaciones y otras / Transfer of fixed assets and sundry	(33.558,53)	-
<b>Otros resultados / Other results</b>	-	<b>362.114,83</b>
a) Ingresos excepcionales / Exceptional income	-	466.423,09
b) Gastos excepcionales / Exceptional expenditure	-	(104.308,26)
<b>A.1. RESULTADO DE EXPLOTACIÓN / GROSS PROFIT (1+3+5+6+7+8+9+10+11)</b>	<b>15.625.437,23</b>	<b>22.813.483,52</b>
<b>12. Ingresos financieros / Financial revenue</b>	<b>1.679.957,03</b>	<b>1.872.068,86</b>
a) De participaciones en instrumentos de patrimonio / Equity participation	-	-
b) De valores negociables y otros instrumentos financieros / Securities	1.679.957,03	1.872.068,86
c) Incorporación al activo de gastos financieros / Capitalisation of financial expenditure	-	-
<b>13. Gastos financieros / Financial expenditure</b>	<b>(239.266,82)</b>	<b>(68.181,40)</b>
a) Por deudas con terceros / Servicing third party debts	(216.781,47)	(45.446,66)
b) Por actualización de provisiones / Variation in provisions	(22.485,35)	(22.734,74)
<b>14. Variación de valor razonable en instrumentos financieros / Variation in working capital</b>	-	-
<b>16. Deterioro y resultado por enajenaciones de instrumentos financieros</b> Loss and balance on disposal of financial assets	-	-
a) Deterioros y pérdidas / Losses and deterioration	-	-
b) Resultados por enajenaciones y otras / Profits from disposal and others	-	-
<b>A.2. RESULTADO FINANCIERO / FINANCIAL PROFIT (12+13+14+16)</b>	<b>1.440.690,21</b>	<b>1.803.887,46</b>
<b>A.3. RESULTADO ANTES DE IMPUESTOS / PRE-TAX PROFIT (A.1+A.2)</b>	<b>17.066.127,44</b>	<b>24.617.370,98</b>
<b>17. Impuesto sobre beneficios / Corporation tax</b>	<b>(190.857,86)</b>	<b>(419.625,01)</b>
<b>A.4. RESULTADO DEL EJERCICIO / TOTAL PROFIT (A.3+17)</b>	<b>16.875.269,58</b>	<b>24.197.745,97</b>



## 1.2 BALANCE AL CIERRE DEL EJERCICIO 2014

### BALANCE SHEET 2014 FINANCIAL YEAR

EUROS

ACTIVO / ASSETS	2014	2013
<b>A. ACTIVO NO CORRIENTE / NON-CURRENT ASSETS</b>	<b>448.616.091,10</b>	<b>449.642.390,29</b>
<b>I. Inmovilizado intangible / Intangible assets</b>	<b>233.354,43</b>	<b>290.735,54</b>
1. Propiedad industrial y otro inmovilizado intangible Industrial property and other intangible assets	(0,00)	(0,00)
2. Aplicaciones informáticas IT applications	233.354,43	290.735,54
3. Anticipos para inmovilizaciones intangibles Prepayments for intangible assets	-	-
<b>II. Inmovilizado material / Tangible assets</b>	<b>370.456.305,92</b>	<b>369.863.840,94</b>
1. Terrenos y bienes naturales Freehold land	65.493.812,54	63.155.991,29
2. Construcciones Buildings	256.560.753,88	266.903.822,22
3. Equipamientos e instalaciones técnicas Plant and technical equipment	12.479.228,67	5.362.787,81
4. Inmovilizado en curso y anticipos Current assets and advance payments	34.716.879,97	32.851.237,97
5. Otro inmovilizado Other fixed assets	1.205.630,86	1.590.001,65
<b>III. Inversiones inmobiliarias / Real estate investment</b>	<b>77.407.653,32</b>	<b>79.078.584,04</b>
1. Terrenos Freehold land	64.033.614,39	64.033.614,39
2. Construcciones Buildings	13.374.038,93	15.044.969,65
<b>IV. Inversiones en empresas del grupo y asociadas a largo plazo</b> Long term investments in associated and affiliated undertakings	-	-
1. Instrumentos de patrimonio Equity	-	-
2. Créditos a empresas Loans to other undertakings	-	-
<b>V. Inversiones financieras a largo plazo / Long-term investments</b>	<b>407.646,15</b>	<b>409.229,77</b>
1. Instrumentos de patrimonio Equity	-	-
2. Créditos a terceros Loans to third parties	407.646,15	409.229,77
3. Administraciones Públicas, subvenciones oficiales pendientes de cobro Accounts receivable - public authorities and oficial funding	-	-
4. Otros activos financieros Other financial assets	-	-
<b>VI. Activos por impuesto diferido / Assets through deferred taxes</b>	<b>111.131,28</b>	-
<b>VII. Deudores comerciales no corrientes / Non-current commercial creditors</b>	-	-
<b>B. ACTIVO CORRIENTE / CURRENT ASSETS</b>	<b>90.634.628,93</b>	<b>71.337.320,93</b>
<b>I. Activos no corrientes mantenidos para la venta / Non-current assets maintained for sale</b>	-	-
<b>II. Existencias / Stocks</b>	<b>314.306,94</b>	<b>325.981,20</b>
<b>III. Deudores comerciales y otras cuentas a cobrar / Trade and other accounts receivable</b>	<b>15.527.347,02</b>	<b>12.720.817,89</b>
1. Clientes por ventas y prestaciones de servicios Accounts receivable for sale and provision of services	14.232.792,75	10.392.621,45
2. Clientes y deudores, empresas del grupo y asociadas Accounts receivable - associated and affiliated undertakings	-	832.462,88
3. Deudores varios Other accounts receivable	212.258,43	233.970,04
4. Administraciones Públicas, subvenciones oficiales pendientes de cobro Current Accounts receivable - public authorities and oficial funding	-	-
5. Otros créditos con las Administraciones Públicas Other accounts receivable with public authorities	1.082.295,84	1.261.763,52
<b>IV. Inversiones en empresas del grupo y asociadas a corto plazo</b> Short-term investments with affiliated and associated undertakings	-	-
<b>V. Inversiones financieras a corto plazo / Short-term financial investments</b>	<b>61.087.167,14</b>	<b>50.045.756,89</b>
1. Instrumentos de patrimonio Equity	-	-
2. Créditos a empresas Loans to other undertakings	-	-
3. Otros activos financieros Other financial assets	61.087.167,14	50.045.756,89
<b>VI. Periodificaciones / Prepayments</b>	-	-
<b>VII. Efectivo y otros activos líquidos equivalentes / Cash and other equivalent liquid assets</b>	<b>13.705.807,83</b>	<b>8.244.764,95</b>
1. Tesorería Cash and bank balances	13.705.807,83	8.244.764,95
2. Otros activos líquidos equivalentes Other equivalent liquid assets	-	-
<b>TOTAL ACTIVO (A+B) / TOTAL ASSETS (A+B)</b>	<b>539.250.720,03</b>	<b>520.979.711,22</b>

EUROS

PATRIMONIO NETO Y PASIVO / NET EQUITY AND LIABILITIES	2014	2013
<b>A) PATRIMONIO NETO / NET EQUITY</b>	<b>519.728.329,79</b>	<b>504.761.071,20</b>
<b>A-1) Fondos propios</b> Shareholders' equity	<b>480.310.688,32</b>	<b>463.435.418,74</b>
<b>I. Patrimonio</b> / Equity	<b>212.383.193,39</b>	<b>212.383.193,39</b>
<b>II. Resultados acumulados</b> / Retained earnings	<b>251.052.225,35</b>	<b>226.854.479,38</b>
<b>III. Resultado del ejercicio</b> / Results for the year	<b>16.875.269,58</b>	<b>24.197.745,97</b>
<b>A-2) Ajustes por cambios de valor</b> Market adjustments	-	-
<b>I. Activos financieros disponibles para la venta</b> / Financial assets available for sale	-	-
<b>II. Operaciones de cobertura</b> / Cover transactions	-	-
<b>III. Otros</b> / Sundry	-	-
<b>A-3) Subvenciones, donaciones y legados recibidos</b> Current	<b>39.417.641,47</b>	<b>41.325.652,46</b>
<b>B) PASIVO NO CORRIENTE / NON-CURRENT LIABILITIES</b>	<b>7.274.871,42</b>	<b>7.305.016,13</b>
<b>I. Provisiones a largo plazo</b> / Long term provisions	<b>3.175.534,15</b>	<b>3.693.752,71</b>
1. Obligaciones por prestaciones a largo plazo al personal Long-term personnel provisions	-	-
2. Provisión para responsabilidades Provision for liabilities	1.912.713,60	1.907.362,13
3. Otras provisiones Sundry provisions	1.262.820,55	1.786.390,58
<b>II. Deudas a largo plazo</b> / Long-term debts	<b>4.099.337,27</b>	<b>3.611.263,42</b>
1. Deudas con entidades de crédito Debts with credit institutions	-	-
2. Proveedores de inmovilizado a largo plazo Long-term assets suppliers	-	-
3. Otras Sundry	4.099.337,27	3.611.263,42
<b>III. Deudas con empresas del grupo y asociadas a largo plazo</b> / Long-term debts with associated and affiliated undertakings	-	-
<b>IV. Pasivos por impuesto diferido</b> / Liabilities through deferred taxation	-	-
<b>V. Periodificaciones a largo plazo</b> / Long-term prepayments	-	-
<b>C. PASIVO CORRIENTE / CURRENT LIABILITIES</b>	<b>12.247.518,82</b>	<b>8.913.623,89</b>
<b>II. Provisiones a corto plazo</b> / Short-term provisions	-	-
<b>III. Deudas a corto plazo</b> / Short-term debts	<b>6.635.317,32</b>	<b>2.049.116,49</b>
1. Deudas con entidades de crédito Debts with credit institutions	-	-
2. Proveedores de inmovilizado a corto plazo Short-term assets suppliers	6.248.630,24	1.999.208,53
3. Otros pasivos financieros Sundry financial liabilities	386.687,08	49.907,96
<b>IV. Deudas con empresas del grupo y asociadas a corto plazo</b> / Short-term debts with associated and affiliated undertakings	<b>135.890,76</b>	<b>832.462,88</b>
<b>V. Acreedores comerciales y otras cuentas a pagar</b> / Trade creditors and other accounts payable	<b>5.476.310,74</b>	<b>6.032.044,52</b>
1. Acreedores y otras cuentas a pagar Creditors and other accounts payable	4.125.193,60	5.089.535,60
2. Administraciones Públicas, anticipos de subvenciones Public administration subsidy advances	-	-
3. Otras deudas con las Administraciones Públicas Other accounts payable with Public Authorities	1.351.117,14	942.508,92
<b>VI. Periodificaciones</b> / Prepayments	-	-
<b>TOTAL PATRIMONIO NETO Y PASIVO (A+B+C) TOTAL NET EQUITY &amp; LIABILITIES (A+B+C)</b>	<b>539.250.720,03</b>	<b>520.979.711,22</b>

### 1.3 ESTADO DE CAMBIOS EN EL PATRIMONIO NETO CORRESPONDIENTE AL EJERCICIO TERMINADO EL 31-12-14

EQUITY STATEMENT FOR THE PERIOD ENDING 31-12-14

#### 1.3.1 ESTADO DE INGRESOS Y GASTOS RECONOCIDOS CORRESPONDIENTE AL EJERCICIO TERMINADO EL 31-12-14

INCOME AND EXPENDITURE FOR THE FINANCIAL YEAR ENDING 31-12-14

EUROS

	2014	2013
<b>A. RESULTADO DE LA CUENTA DE PÉRDIDAS Y GANANCIAS / RESULTS OF PROFIT AND LOSS STATEMENT</b>	<b>16.875.269,58</b>	<b>24.197.745,97</b>
<b>B. INGRESOS Y GASTOS IMPUTADOS DIRECTAMENTE AL PATRIMONIO NETO (I+II+III+V)</b> REVENUE AND EXPENDITURE CHARGED DIRECTLY AGAINST EXPENDITURE (I+II+III+V)	-	3.210.634,50
<b>I. Por valoración de instrumentos financieros / By valuation of financial instruments</b>	-	-
1. Activos financieros disponibles para la venta Financial assets available for sale	-	-
2. Otros ingresos/gastos Other revenue/expenditure	-	-
<b>II. Por coberturas de flujos de efectivos / Covering cash flow</b>	-	-
<b>III. Subvenciones, donaciones y legados / Subsidies, gifts and bequests</b>	-	3.210.634,50
<b>V. Efecto impositivo / Tax rate</b>	-	-
<b>C. TRANSFERENCIAS A LA CUENTA DE PÉRDIDAS Y GANANCIAS (VI+VII+VIII+IX)</b> TRANSFER TO PROFIT AND LOSS ACCOUNT (VI+VII+VIII+IX)	<b>(1.908.010,99)</b>	<b>(1.845.833,52)</b>
<b>VI. Por valoración de activos y pasivos / Valuation of assets and liabilities</b>	-	-
1. Activos financieros disponibles para la venta Financial assets available for sale	-	-
2. Otros ingresos/gastos Other revenue/expenditure	-	-
<b>VII. Por coberturas de flujos de efectivos / Covering cash flow</b>	-	-
<b>VIII. Subvenciones, donaciones y legados / Subsidies, gifts and bequests</b>	<b>(1.908.010,99)</b>	<b>(1.845.833,52)</b>
<b>IX. Efecto impositivo / Tax rate</b>	-	-
<b>TOTAL DE INGRESOS Y GASTOS RECONOCIDOS / TOTAL NET EQUITY &amp; LIABILITIES (A+B+C)</b>	<b>14.967.258,59</b>	<b>25.562.546,95</b>



### 1.3.2 ESTADO TOTAL DE CAMBIOS EN EL PATRIMONIO NETO CORRESPONDIENTE AL EJERCICIO TERMINADO EL 31-12-14 CHANGES IN EQUITY IN THE PERIOD ENDING 31-12-14

EUROS

	PATRIMONIO EQUITY	RESULTADOS DE EJERCICIOS ANTERIORES NET INCOME FROM 2011	RESULTADO DEL EJERCICIO NET INCOME	AJUSTES POR CAMBIO DE VALOR ADJUSTMENTS FOR CHANGES IN VALUE	SUBVENCIONES, DONACIONES Y LEGADOS RECIBIDOS SUBSIDIES, GIFTS AND BEQUEST'S FACTOR	TOTAL
<b>A. SALDO, FINAL DEL AÑO 2011</b> BALANCE END OF 2011	212.383.193,39	212.366.216,46	14.488.262,92	-	39.960.851,48	479.198.524,25
I. Ajustes por cambios de criterio 2011 y anteriores Adjustments for changes in criteria 201	-	-	-	-	-	-
II. Ajustes por errores 2011 y anteriores Adjustments for errors 2011	-	-	-	-	-	-
<b>B. SALDO AJUSTADO, INICIO DEL AÑO 2012</b> ADJUSTED BALANCE BEGINNING OF 2012	212.383.193,39	212.366.216,46	14.488.262,92	-	39.960.851,48	479.198.524,25
I. Total ingresos y gastos reconocidos Total revenue and expenditure	-	-	24.197.745,97	-	1.364.800,98	25.562.546,95
II. Operaciones con socios o propietarios <sup>(*)</sup> Operations with affiliated or associated undertakings	-	-	-	-	-	-
III. Otras variaciones del patrimonio neto Other variations in equity	-	14.488.262,92	(14.488.262,92)	-	-	-
<b>C. SALDO, FINAL DEL AÑO 2012</b> BALANCE END OF 2012	212.383.193,39	226.854.479,38	24.197.745,97	-	41.325.652,46	504.761.071,20
I. Ajustes por cambios de criterio 2012 Adjustments for changes in criteria 2012	-	-	-	-	-	-
II. Ajustes por errores 2012 Adjustments for errors 2012	-	-	-	-	-	-
<b>D. SALDO AJUSTADO, INICIO DEL AÑO 2013</b> ADJUSTED BALANCE BEGINNING OF 2013	212.383.193,39	226.854.479,38	24.197.745,97	-	41.325.652,46	504.761.071,20
I. Total ingresos y gastos reconocidos Total revenue and expenditure	-	-	16.875.269,58	-	(1.908.010,99)	14.967.258,59
II. Operaciones con socios o propietarios <sup>(*)</sup> Operations with affiliated or associated undertakings	-	-	-	-	-	-
III. Otras variaciones del patrimonio neto Other variations in equity	-	24.197.745,97	(24.197.745,97)	-	-	-
<b>E. SALDO, FINAL DEL AÑO 2013</b> BALANCE END OF 2013	212.383.193,39	251.052.225,35	16.875.269,58	-	39.417.641,47	519.728.329,79

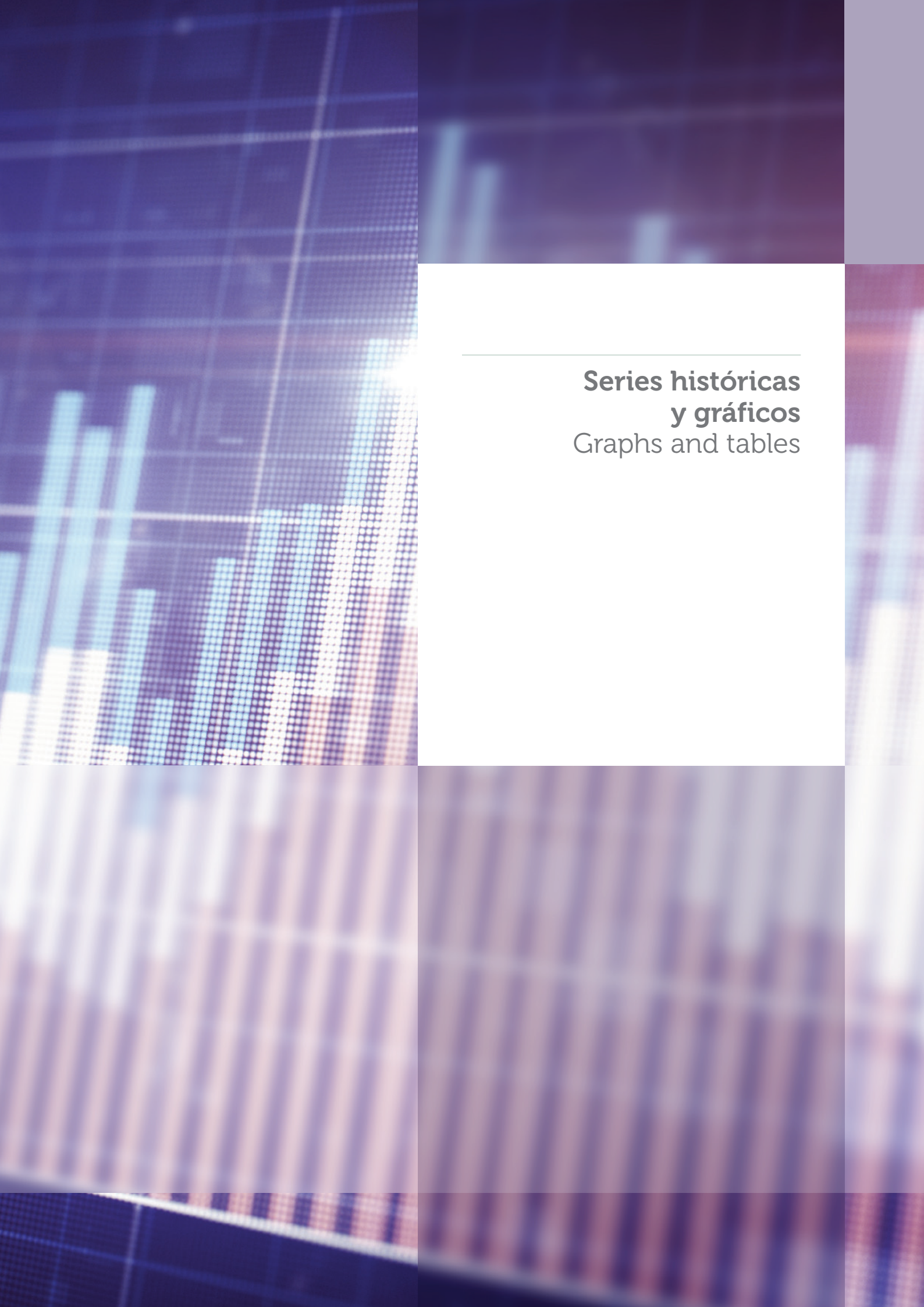
\* Adscripciones y desadscripciones patrimoniales. / Attribution and disattribution of assets.





1





---

**Series históricas  
y gráficos**  
Graphs and tables

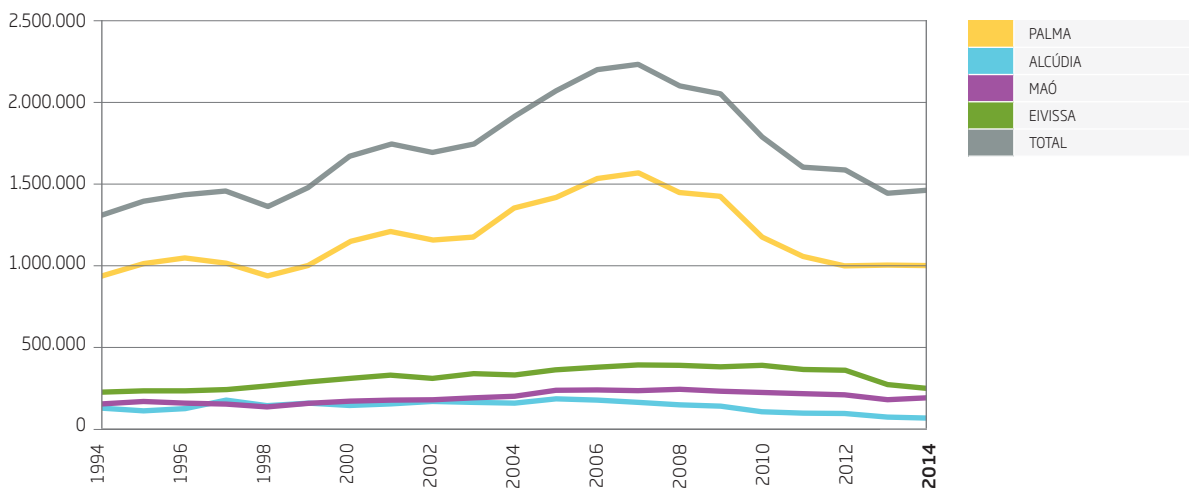
## SERIES HISTÓRICAS Y GRÁFICOS

### GRAPHS AND TABLES

#### GRANELES LÍQUIDOS LIQUID BULKS

Toneladas Tones

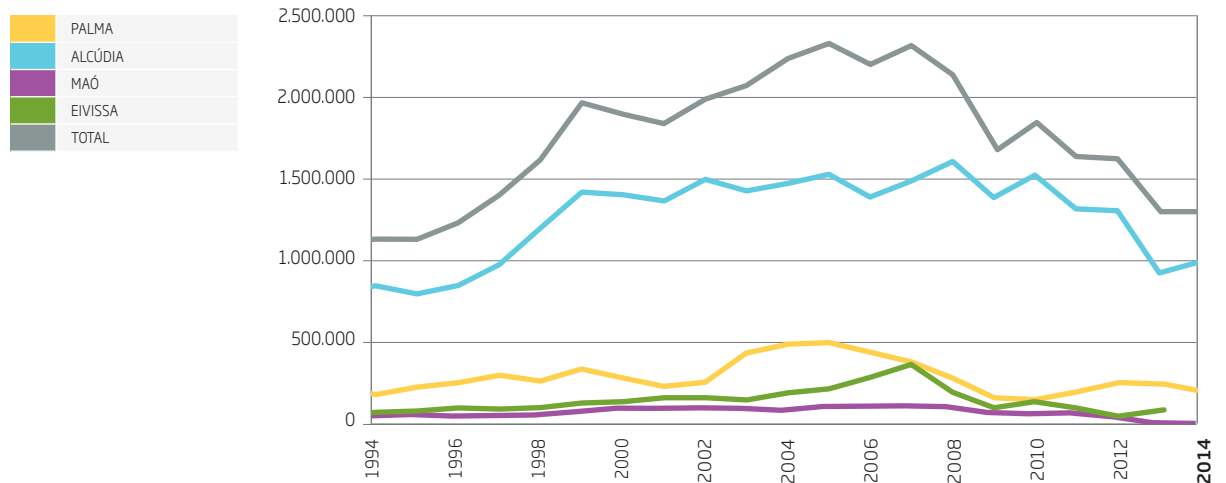
AÑO YEAR	PUERTO DE PALMA PORT OF PALMA	PUERTO DE ALCÚDIA PORT OF ALCÚDIA	PUERTO DE MAÓ PORT OF MAÓ	PUERTO DE EIVISSA PORT OF EIVISSA	TOTAL
1994	899.904	84.151	112.755	183.138	1.279.948
1995	971.237	67.721	125.412	192.268	1.356.638
1996	1.014.836	81.086	117.233	192.698	1.405.853
1997	982.475	128.363	110.730	203.193	1.424.761
1998	909.807	99.898	93.598	220.367	1.323.670
1999	962.402	115.468	113.162	246.288	1.437.320
2000	1.113.440	109.899	129.515	269.541	1.622.395
2001	1.174.196	109.778	135.216	287.918	1.707.108
2002	1.127.306	122.989	138.674	268.769	1.657.738
2003	1.128.330	121.074	150.481	297.637	1.697.522
2004	1.319.836	110.957	152.070	289.198	1.872.061
2005	1.372.930	141.441	193.737	322.574	2.030.682
2006	1.497.681	135.595	199.567	336.435	2.169.278
2007	1.536.452	122.711	194.487	352.886	2.206.536
2008	1.416.034	104.676	205.113	348.310	2.074.133
2009	1.393.296	100.494	191.064	338.678	2.023.532
2010	1.158.177	67.533	186.634	350.137	1.762.481
2011	1.021.741	58.308	172.644	325.103	1.577.796
2012	968.052	52.062	174.415	334.278	1.528.807
2013	979.267	46.127	154.180	245.062	1.424.636
2014	999.374	48.428	177.166	222.397	1.447.365



## GRANELES SÓLIDOS SOLID BULKS

Toneladas Tones

AÑO YEAR	PUERTO DE PALMA PORT OF PALMA	PUERTO DE ALCÚDIA PORT OF ALCÚDIA	PUERTO DE MAÓ PORT OF MAÓ	PUERTO DE EIVISSA PORT OF EIVISSA	TOTAL
1994	173.880	836.687	49.393	63.425	1.123.385
1995	215.425	789.009	42.677	75.173	1.122.284
1996	247.777	839.578	46.230	89.210	1.222.795
1997	291.462	968.882	48.915	82.984	1.392.243
1998	258.063	1.190.940	67.614	93.583	1.610.200
1999	332.662	1.408.766	87.969	123.292	1.952.689
2000	273.893	1.391.775	87.095	129.414	1.882.177
2001	225.379	1.355.502	90.668	155.257	1.826.806
2002	247.225	1.487.841	87.844	153.494	1.976.404
2003	425.150	1.417.010	76.438	141.005	2.059.603
2004	480.571	1.463.452	97.566	182.667	2.224.256
2005	492.729	1.517.094	102.601	205.915	2.318.339
2006	430.183	1.377.836	102.002	278.415	2.188.436
2007	372.428	1.476.423	97.339	359.328	2.305.518
2008	276.267	1.595.886	65.490	186.348	2.123.991
2009	151.384	1.373.518	56.502	92.929	1.674.333
2010	142.926	1.514.810	60.177	126.633	1.844.546
2011	189.857	1.307.600	39.991	88.933	1.626.381
2012	243.717	1.283.908	17.333	63.382	1.608.340
2013	250.937	932.651	14.365	101.295	1.299.248
2014	204.739	990.624	16.065	95.189	1.306.617



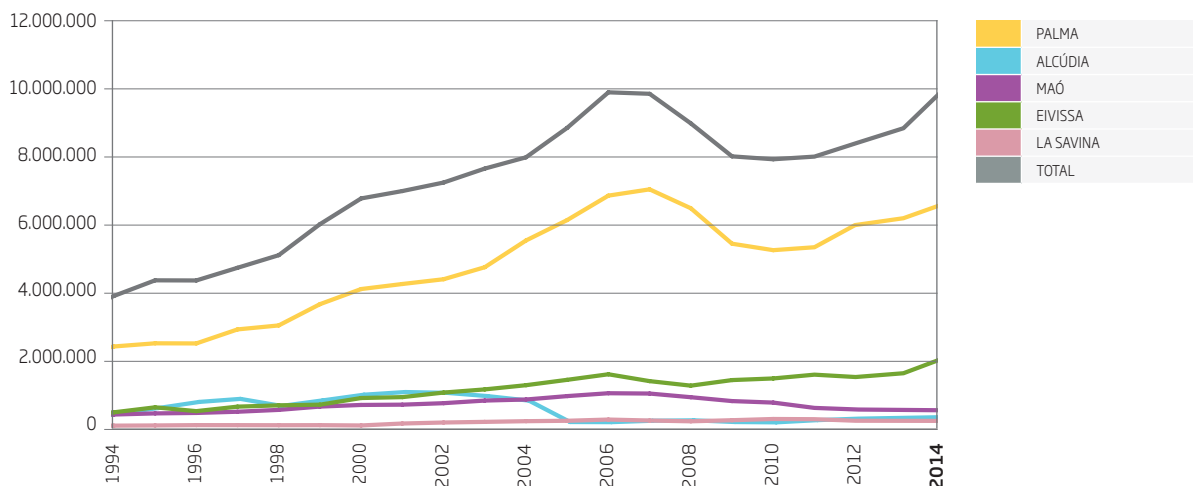
## SERIES HISTÓRICAS Y GRÁFICOS

### GRAPHS AND TABLES

#### MERCANCÍAS GENERAL GENERAL CARGO

Toneladas Tones

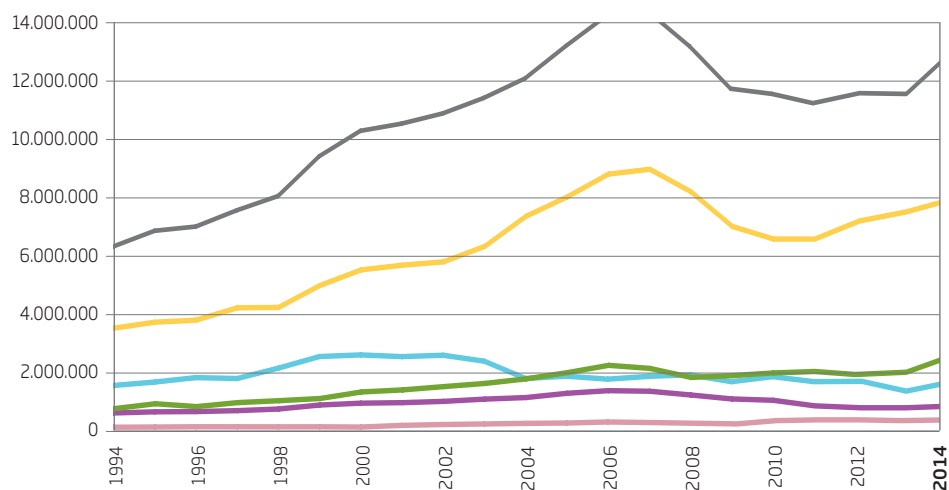
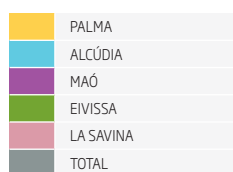
AÑO YEAR	PUERTO DE PALMA PORT OF PALMA	PUERTO DE ALCÚDIA PORT OF ALCÚDIA	PUERTO DE MAÓ PORT OF MAÓ	PUERTO DE EIVISSA PORT OF EIVISSA	PUERTO DE LA SAVINA PORT OF LA SAVINA	TOTAL
1994	2.408.492	583.416	392.389	457.539	63.006	3.904.842
1995	2.502.336	765.621	425.760	605.748	68.736	4.368.201
1996	2.498.444	855.672	439.268	492.532	78.153	4.364.069
1997	2.913.883	647.046	475.165	626.042	77.420	4.739.556
1998	3.031.788	811.601	529.747	664.352	75.295	5.112.783
1999	3.661.276	980.011	627.878	684.545	77.145	6.030.855
2000	4.109.678	1.058.627	676.204	881.273	68.317	6.794.099
2001	4.259.265	1.035.383	684.449	907.939	125.865	7.012.901
2002	4.400.144	937.799	728.332	1.042.881	155.777	7.264.933
2003	4.756.290	804.792	805.902	1.136.669	174.715	7.678.368
2004	5.548.305	170.628	837.050	1.261.093	195.037	8.012.113
2005	6.153.214	166.527	938.262	1.420.280	207.285	8.885.568
2006	6.877.531	208.624	1.023.325	1.584.910	243.406	9.937.796
2007	7.063.161	221.105	1.013.829	1.381.640	214.610	9.894.345
2008	6.503.035	170.239	905.117	1.247.622	191.588	9.017.601
2009	5.452.969	160.422	790.778	1.412.826	223.833	8.040.828
2010	5.261.337	226.250	745.916	1.461.133	260.089	7.954.725
2011	5.348.283	269.734	588.486	1.573.305	253.941	8.033.749
2012	5.935.912	247.559	537.724	1.434.220	252.873	8.408.288
2013	6.203.304	268.754	506.883	1.514.319	243.704	8.736.964
2014	6.582.546	436.745	545.044	2.026.243	281.472	9.872.050



## TOTAL MERCANCÍAS TOTAL CARGO

Toneladas Tones

AÑO YEAR	PUERTO DE PALMA PORT OF PALMA	PUERTO DE ALCÚDIA PORT OF ALCÚDIA	PUERTO DE MAÓ PORT OF MAÓ	PUERTO DE EIVISSA PORT OF EIVISSA	PUERTO DE LA SAVINA PORT OF LA SAVINA	TOTAL
1994	3.482.276	1.504.254	554.537	704.102	63.006	6.308.175
1995	3.688.998	1.622.351	593.849	873.189	68.736	6.847.123
1996	3.761.057	1.776.336	602.731	774.440	78.153	6.992.717
1997	4.187.820	1.744.291	634.810	912.219	77.420	7.556.560
1998	4.199.658	2.102.439	690.959	978.302	75.295	8.046.653
1999	4.956.340	2.504.245	829.009	1.054.125	77.145	9.420.864
2000	5.497.011	2.560.301	892.814	1.280.228	68.317	10.298.671
2001	5.658.840	2.500.663	910.333	1.351.114	125.865	10.546.815
2002	5.774.675	2.548.629	954.850	1.465.144	155.777	10.899.075
2003	6.309.770	2.342.876	1.032.821	1.575.311	174.715	11.435.493
2004	7.348.712	1.745.037	1.086.686	1.732.958	195.037	12.108.430
2005	8.018.873	1.825.062	1.234.600	1.948.769	207.285	13.234.589
2006	8.805.395	1.722.055	1.324.894	2.199.760	243.406	14.295.510
2007	8.972.041	1.820.239	1.305.655	2.093.854	223.873	14.415.662
2008	8.195.336	1.870.801	1.175.720	1.782.280	198.229	13.222.366
2009	6.997.649	1.634.434	1.038.344	1.844.433	238.971	11.753.831
2010	6.562.440	1.808.593	992.727	1.937.903	275.374	11.577.037
2011	6.559.881	1.635.642	801.121	1.987.341	270.940	11.254.925
2012	7.147.681	1.583.529	729.472	1.831.880	268.311	11.560.873
2013	7.433.508	1.247.532	675.428	1.860.676	254.005	11.471.149
2014	7.786.653	1.475.797	738.275	2.343.829	294.310	12.638.864



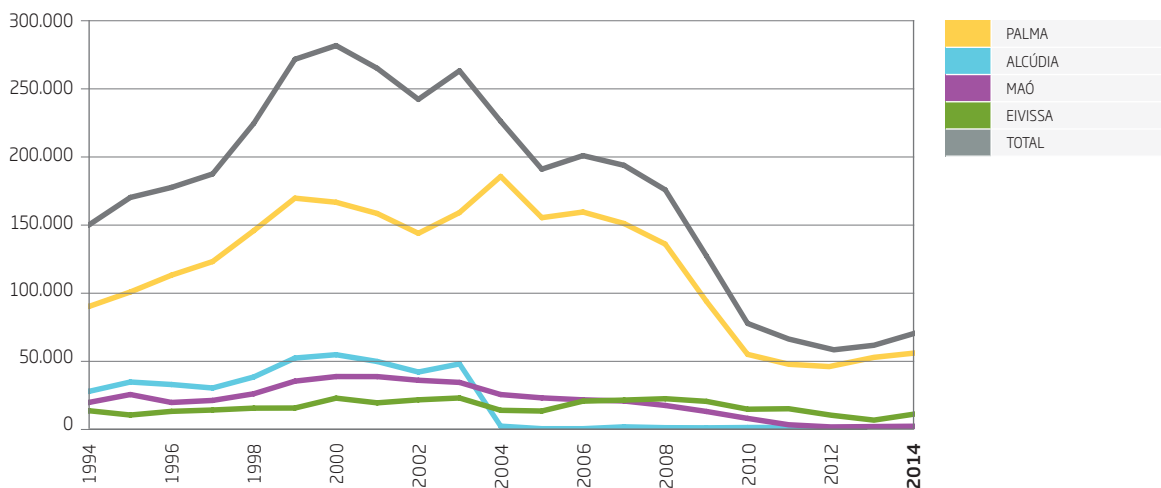
## SERIES HISTÓRICAS Y GRÁFICOS

### GRAPHS AND TABLES

#### CONTENEDORES CONTAINERS

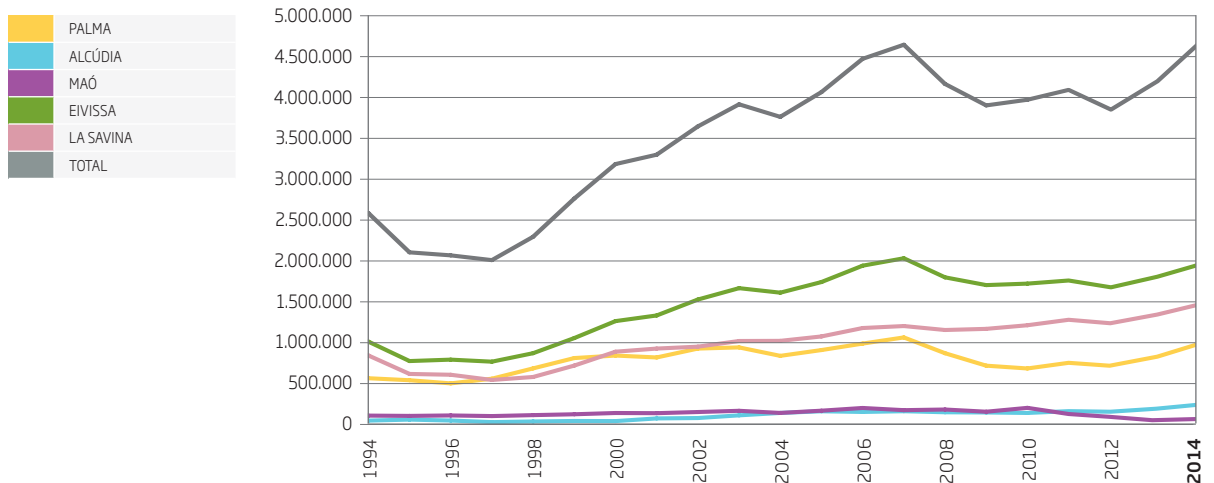
TEUs

AÑO YEAR	PUERTO DE PALMA PORT OF PALMA	PUERTO DE ALCÚDIA PORT OF ALCÚDIA	PUERTO DE MAÓ PORT OF MAÓ	PUERTO DE EIVISSA PORT OF EIVISSA	TOTAL
1994	90.169	27.546	19.399	13.242	150.356
1995	100.795	34.420	25.198	10.079	170.492
1996	113.178	32.572	19.329	12.792	177.871
1997	123.217	29.997	20.841	13.772	187.827
1998	146.018	38.136	25.749	15.156	225.059
1999	169.955	52.087	35.051	15.236	272.329
2000	166.935	54.555	38.446	22.515	282.451
2001	158.657	49.555	38.408	19.061	265.681
2002	144.029	41.775	35.697	21.285	242.786
2003	159.348	47.771	34.124	22.649	263.892
2004	185.998	1.881	25.171	13.565	226.615
2005	155.582	-	22.725	13.025	191.332
2006	159.745	-	21.277	20.310	201.332
2007	151.261	1.372	20.417	21.101	194.151
2008	136.091	742	17.144	22.106	176.083
2009	93.907	636	12.701	20.158	127.402
2010	54.811	864	7.592	14.362	77.629
2011	47.506	985	2.898	14.689	66.078
2012	46.358	636	1.253	9.168	57.415
2013	54.133	452	51	6.749	61.385
2014	56.755	775	357	11.706	69.593



## PASAJEROS REGULAR LINE PASSENGERS

AÑO YEAR	PUERTO DE PALMA PORT OF PALMA	PUERTO DE ALCÚDIA PORT OF ALCÚDIA	PUERTO DE MAÓ PORT OF MAÓ	PUERTO DE EIVISSA PORT OF EIVISSA	PUERTO DE LA SAVINA PORT OF LA SAVINA	TOTAL
1994	558.419	48.140	108.371	999.534	832.814	2.547.278
1995	534.152	60.119	104.708	765.069	609.957	2.074.005
1996	496.354	48.828	110.249	782.163	600.132	2.037.726
1997	552.744	29.765	102.674	757.665	537.499	1.980.347
1998	676.740	37.599	114.081	859.587	573.253	2.261.260
1999	801.143	43.596	124.400	1.041.825	710.729	2.721.693
2000	831.354	42.189	139.603	1.245.949	877.715	3.136.810
2001	808.356	74.403	137.521	1.314.051	915.470	3.249.801
2002	915.404	79.019	151.394	1.505.866	938.383	3.590.066
2003	929.484	111.413	166.113	1.642.824	1.006.608	3.856.442
2004	827.685	140.442	140.437	1.588.477	1.008.287	3.705.328
2005	897.492	160.445	167.523	1.716.480	1.061.475	4.003.415
2006	975.384	152.285	200.222	1.913.515	1.162.796	4.404.202
2007	1.049.627	161.113	173.808	2.002.619	1.186.655	4.573.822
2008	859.435	148.525	181.588	1.773.072	1.138.988	4.101.608
2009	709.489	146.241	155.119	1.679.679	1.152.744	3.843.272
2010	675.835	140.202	201.626	1.697.483	1.196.252	3.911.398
2011	743.823	161.875	127.554	1.734.776	1.269.620	4.037.648
2012	719.721	142.761	125.857	1.626.676	1.245.472	3.860.487
2013	809.310	163.447	114.175	1.832.740	1.367.296	4.286.968
2014	805.691	246.455	119.855	2.074.574	1.562.142	4.808.717



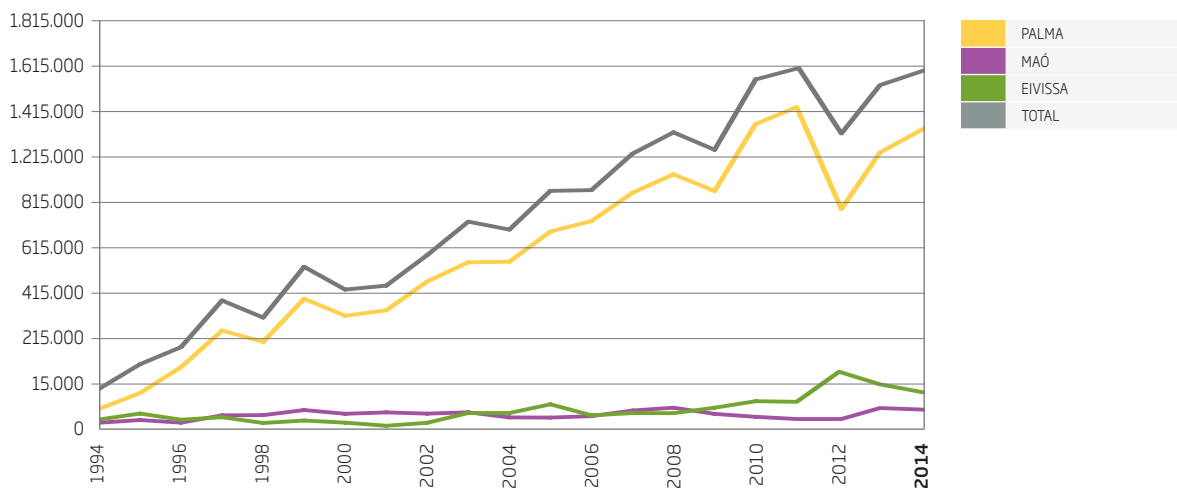


## SERIES HISTÓRICAS Y GRÁFICOS

### GRAPHS AND TABLES

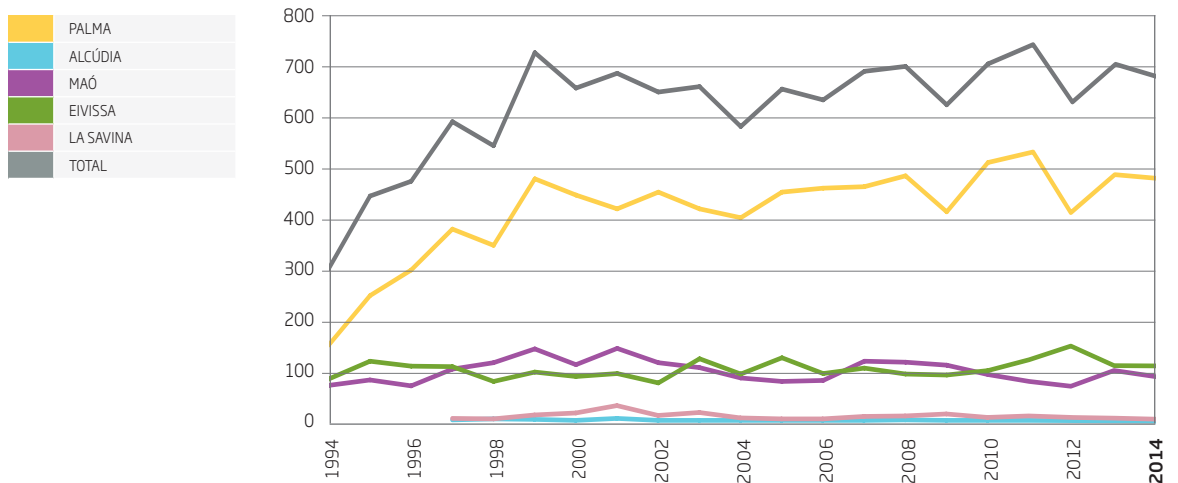
#### PASAJEROS CRUCEROS TURÍSTICOS CRUISE LINE PASSENGERS

AÑO YEAR	PUERTO DE PALMA PORT OF PALMA	PUERTO DE ALCÚDIA PORT OF ALCÚDIA	PUERTO DE MAÓ PORT OF MAÓ	PUERTO DE EIVISSA PORT OF EIVISSA	PUERTO DE LA SAVINA PORT OF LA SAVINA	TOTAL
1994	97.444	-	37.098	51.226	-	185.768
1995	167.458	-	49.076	77.645	-	294.179
1996	281.556	-	37.505	50.389	-	369.450
1997	442.585	-	69.841	61.357	876	574.659
1998	392.502	-	70.745	36.084	176	499.507
1999	582.257	-	93.152	46.758	573	722.740
2000	507.486	-	76.630	37.516	1.031	622.663
2001	531.411	136	82.902	23.726	1.883	640.058
2002	658.443	-	77.340	36.983	1.657	774.423
2003	742.662	-	83.207	79.983	15.382	921.234
2004	744.974	-	60.644	80.105	751	886.474
2005	877.912	-	59.950	118.474	339	1.056.675
2006	923.868	-	66.172	69.786	234	1.060.060
2007	1.048.495	-	91.242	79.875	498	1.220.110
2008	1.129.288	55	103.574	79.210	1.947	1.314.074
2009	1.056.215	-	76.246	103.485	1.416	1.237.362
2010	1.350.804	-	63.297	132.149	489	1.546.739
2011	1.424.953	-	53.570	129.369	812	1.608.704
2012	984.785	47	53.702	257.667	1.372	1.297.573
2013	1.245.244	1.025	95.525	191.814	1.066	1.534.674
2014	1.336.437	1.058	79.089	169.065	875	1.586.524



## ESCALAS DE CRUCEROS TURÍSTICOS CRUISE LINER CALLS

AÑO YEAR	PUERTO DE PALMA PORT OF PALMA	PUERTO DE ALCÚDIA PORT OF ALCÚDIA	PUERTO DE MAÓ PORT OF MAÓ	PUERTO DE EIVISSA PORT OF EIVISSA	PUERTO DE LA SAVINA PORT OF LA SAVINA	TOTAL
1994	153	-	71	84	-	308
1995	253	-	82	120	-	455
1996	305	-	70	110	-	485
1997	388	1	104	109	4	606
1998	355	3	117	79	3	557
1999	490	2	145	98	11	746
2000	457	0	113	89	15	674
2001	429	4	146	95	30	704
2002	463	0	117	76	10	666
2003	429	0	107	125	16	677
2004	411	0	86	94	5	596
2005	463	0	79	127	3	672
2006	471	0	81	95	3	650
2007	474	0	120	106	8	708
2008	496	1	118	94	9	718
2009	423	0	112	92	13	640
2010	523	0	93	101	6	723
2011	534	0	79	123	9	745
2012	411	1	74	142	4	632
2013	483	2	101	108	5	699
2014	475	2	86	109	6	678

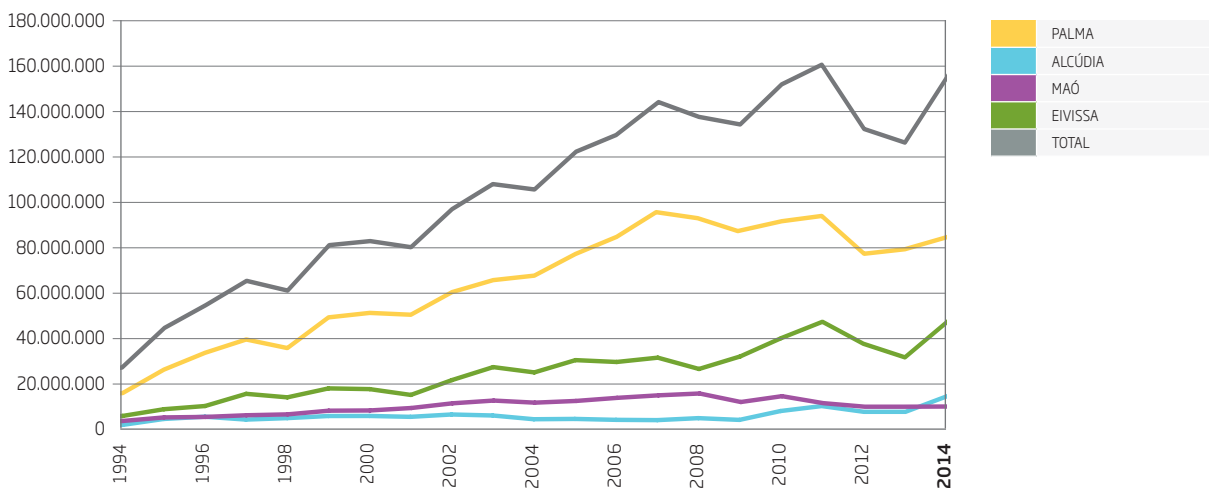


## SERIES HISTÓRICAS Y GRÁFICOS

### GRAPHS AND TABLES

#### ARQUEO BRUTO GROSS TONNAGE

AÑO YEAR	PUERTO DE PALMA PORT OF PALMA	PUERTO DE ALCÚDIA PORT OF ALCÚDIA	PUERTO DE MAÓ PORT OF MAÓ	PUERTO DE EIVISSA PORT OF EIVISSA	TOTAL
1994	15.418.358	1.803.246	3.479.399	5.632.000	26.333.003
1995	25.418.347	4.341.781	4.997.237	8.500.278	43.257.643
1996	32.618.573	5.297.857	5.206.049	9.865.577	52.988.056
1997	38.313.370	4.067.155	5.921.816	15.078.694	63.381.035
1998	34.640.785	4.697.969	6.297.653	13.579.073	59.215.480
1999	47.760.343	5.599.906	7.872.128	17.405.944	78.638.321
2000	49.676.273	5.622.751	7.971.478	17.097.142	80.367.644
2001	48.891.325	5.243.617	9.017.692	14.605.695	77.758.329
2002	58.549.450	6.252.653	11.026.581	20.967.124	96.795.808
2003	63.683.196	5.820.522	12.201.978	26.507.576	108.213.272
2004	65.606.244	4.219.786	11.306.512	24.238.667	105.371.209
2005	74.860.840	4.355.503	12.037.224	29.488.133	120.741.700
2006	82.180.311	3.958.189	13.362.466	28.694.589	128.195.555
2007	94.820.549	3.837.853	14.436.660	30.536.838	143.631.900
2008	91.803.934	4.688.096	15.223.838	25.699.452	137.415.320
2009	87.301.809	3.940.155	11.582.315	31.053.616	133.877.895
2010	91.764.511	7.730.684	14.076.433	38.904.341	152.475.969
2011	93.876.558	9.851.755	11.098.299	45.885.708	160.712.320
2012	76.810.419	6.871.245	10.257.381	37.859.166	131.798.211
2013	78.417.951	7.065.859	10.340.054	31.448.024	127.271.888
2014	83.832.973	13.326.510	9.901.154	46.524.875	153.585.512



## ESCALAS DE BUQUES CALLS

AÑO YEAR	PUERTO DE PALMA PORT OF PALMA	PUERTO DE ALCÚDIA PORT OF ALCÚDIA	PUERTO DE MAÓ PORT OF MAÓ	PUERTO DE EIVISSA PORT OF EIVISSA	PUERTO DE LA SAVINA PORT OF LA SAVINA	TOTAL
1994	3.351	664	787	8.612	6.707	16.770
1995	2.923	562	710	8.963	7.349	17.584
1996	2.652	496	608	8.419	6.896	16.419
1997	2.708	1.288	618	8.284	6.938	17.128
1998	3.174	1.480	663	8.838	7.590	18.571
1999	3.398	1.782	674	9.073	7.644	19.173
2000	3.551	1.620	630	9.483	7.983	19.716
2001	4.328	1.233	900	9.588	7.588	19.309
2002	4.813	1.437	1.023	10.877	8.237	21.574
2003	4.700	1.444	1.131	11.477	8.414	22.466
2004	4.441	1.282	802	11.462	8.473	22.019
2005	4.562	1.323	886	12.940	9.430	24.579
2006	4.802	1.221	1.079	12.761	8.702	23.763
2007	5.127	1.160	1.024	12.799	8.872	28.982
2008	4.279	1.260	1.002	11.258	8.421	26.220
2009	3.337	1.218	740	10.308	7.988	23.591
2010	3.141	1.482	767	10.207	8.223	23.820
2011	2.980	1.468	521	12.953	11.089	29.011
2012	2.622	1.212	458	12.308	10.940	27.540
2013	2.615	1.223	432	12.585	11.461	28.316
2014	2.888	1.457	450	15.594	14.982	35.371

